



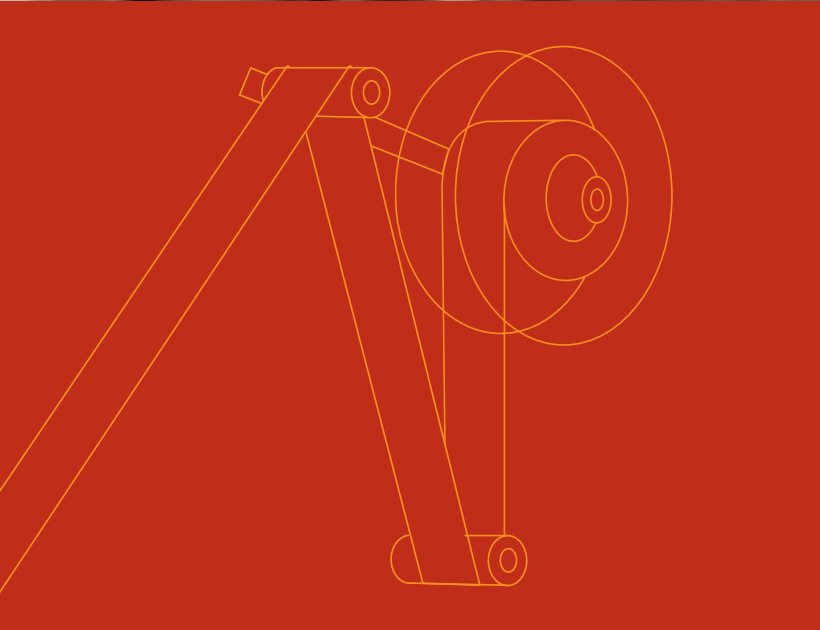
MECTEC

Print & Apply solutions and services
tailored to your business

MECTEC

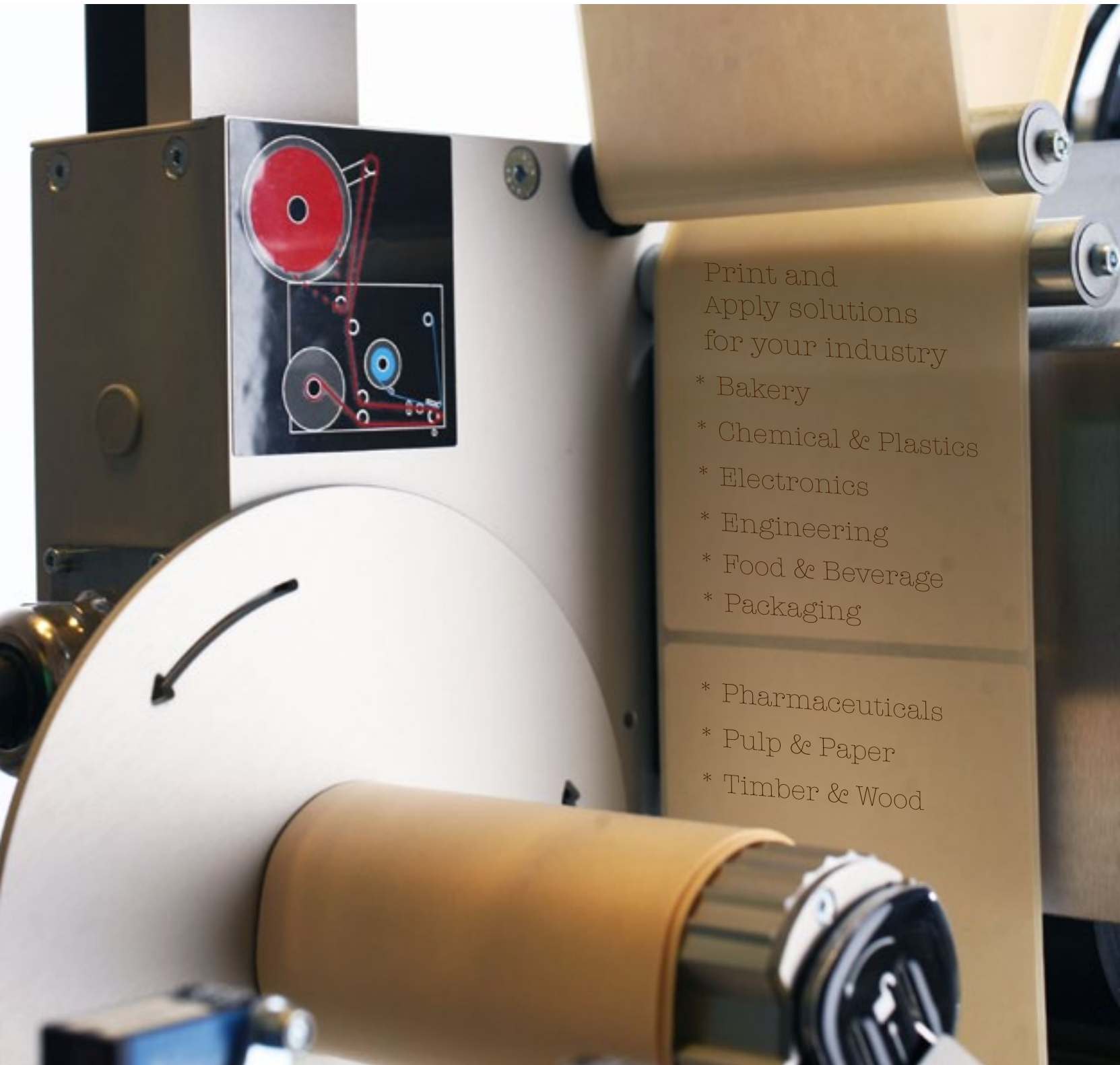
Nothing is impossible

Your business is like no other. Your Print & Apply solution should be too.



Productivity is money. As one of the final yet most important steps before shipping and delivery, the last place you can afford inaccuracies, bottlenecks and downtime is with printing and labelling. At MECTEC, we understand the importance of tracability to your production. In our years of providing Print and Apply

solutions for businesses around the world, we've learned that no two production flows are exactly alike. And that both in the short and long term, the bottom line suffers when businesses have to adapt their equipment and environment to inflexible Auto ID systems.



When you choose MECTEC, we work with you from the start — assessing the realities of your production system, providing options, testing every parameter and producing your final configuration. Our goal is to always find the exact right Print and Apply fit for you, adapted to your environment and optimised for your production. We

back it up with ongoing advice and service that ensures years of dependable printing and labelling. Whatever the application and regardless of the environment.

Patrik Jenemark
Patrik Jenemark, Managing Director



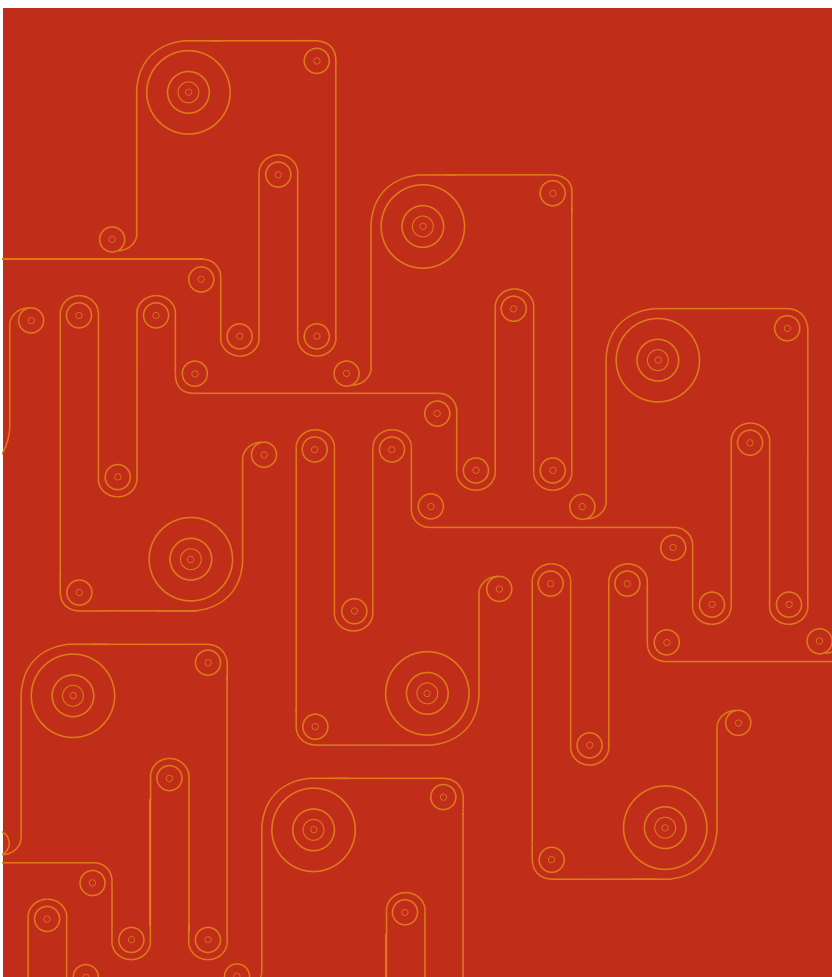
A productive partnership

From design to ongoing service. MECTEC is with you all the way.

There are so many considerations when it comes to printing and labelling — your production line configuration, the space available, environmental challenges such as dust and temperature, product shapes and fragility, local regulations and much more. That's why we take a hands-on approach to designing your printing and labelling solution from the ground up, working closely with you to get every detail right.

After an initial consultation, we often visit your site to ensure we understand your exact needs. Working from that insight, we develop options that take into account

every aspect of your particular work environment. With high quality components, a dedicated production team and thorough testing we ensure you will receive the highest quality printing and labelling solution available for your unique application. We then deliver and install your solution - and follow up with ongoing service and support.



Putting technology to work for you

Working from the best materials provides the best solution.

The built-in modularity concept and the wide range of modules offer unique product flexibility. Over time, as your needs change, you can replace modules quickly – making the product virtually future proof.

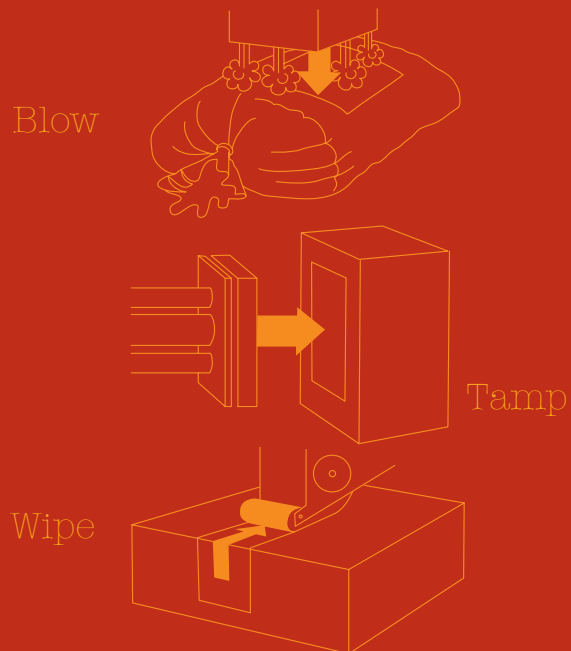
Printing and applicator modules are assembled in-house by a dedicated and experienced team of engineers working with the highest quality parts and material from highly trusted suppliers. Every solution goes through an extensive pre-testing programme to ensure your printing and labelling need will be met from day one.

The printer control software is configured to ensure maximum control, connectivity and efficiency. Our engineers' deep understanding of your solution means we are always equipped to respond quickly if needed for analysis and trouble-shooting. With MECTEC, you'll have the most modern and flexible top quality Print and Apply solution available for your business.





Application technologies



No challenge is too big or too small

Discover your full range of options at www.MECTEC.com.



Product Labelling

A tailored product or packaging labelling solution takes into account the speed of products coming off the line, shape, size, label dimensions, package surface material among many others. We have a comprehensive range of equipment options and accessories to ensure accurate product labelling regardless of sensitivity or working environment.

<http://www.mectec.com/solutions-products/product-labelling/>

Box Labelling

Many businesses require printing and labelling solutions dedicated to preparing box units. Considerations include package speed coming off the line, label size, label and box shape and surface material. MECTEC can help with a range of pre-qualified solutions for simpler applications, or a comprehensive, customised option adapted to any environment.

<http://www.mectec.com/solutions-products/box-labelling/>



Pallet Labelling

Automated pallet labelling is becoming more and more of a necessity for high volume plants that want to improve efficiency and be able to track shipments. MECTEC offers solutions that can be customised to allow height adjustability and labelling on 1, 2, 3 or 4 sides as needed.

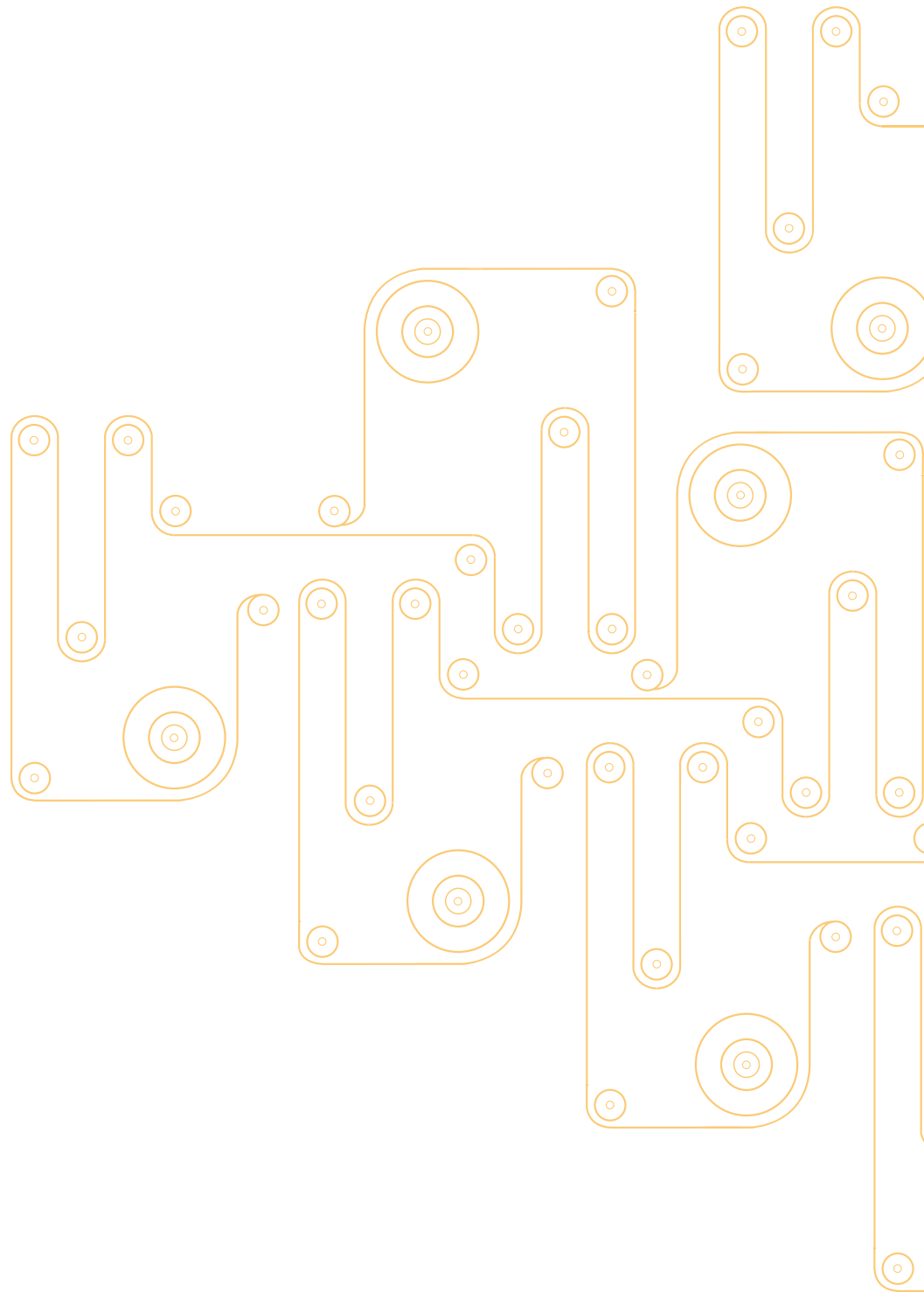
<http://www.mectec.com/solutions-products/pallet-labelling/>



At your service, worldwide

MECTEC is a global company — with our large network of distributors, you are never far from our experts in Print and Apply solutions. Contact any office for sales or service. Visit us at www.mectec.com to find your nearest regional office, or send a request to info@mectec.se — we'll forward your request to your nearest MECTEC representative, who will be happy to support you.





MECTEC

Mectec Elektronik AB | Agnesfridsvägen 189 | SE-213 75 Malmö, Sweden
Phone +46 40 689 25 00 | Fax +46 40 689 25 25 | info@mectec.se | www.mectec.com